

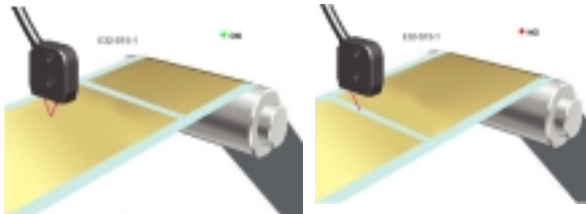


## Luster Sensor Accurately Detects a Thin Clear Coating

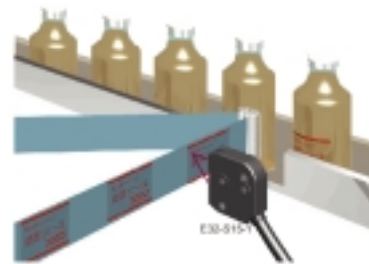
A thin layer of glossy coating presents one of the toughest presence/absence detection problems in packaging and quality inspection. It shows up when you try to inspect clear shrink-wrap safety bands on bottle closures or confirm that clear labels are present on the backing. On the production side, clear sugar coatings on lozenges and pills, and adhesive strips applied to envelopes, boxes and diapers present similar challenges. Luster sensors with easy-to-use teaching functions reliably discriminate between glossy and non-glossy surfaces.

### Typical Applications

**Inspect for adhesive** on envelopes or glossy coating on paper



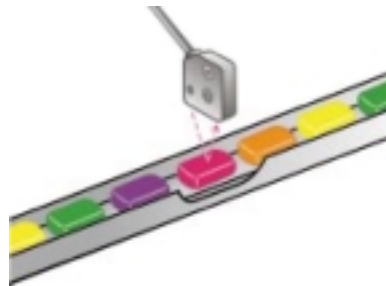
**Detect clear labels** transferred and applied to containers from tack labeler or hopper-and-roll labeler equipment



**Count glass ampoules** in a carrier using the difference in luster to identify the glass objects



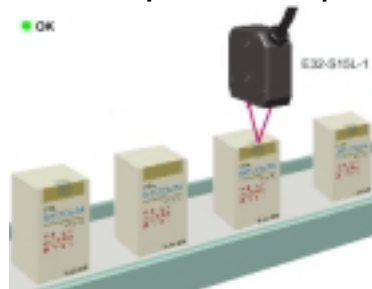
**Detect sugar or film coating** on candy, gum or tablets in food and pharmaceutical finishing



**Detect of clear, shrink-wrap tubing** on bottle closures prior to heating



**Detect tamper-evident tape** closures on boxes



Luster sensors such as Omron's model E3X-NL, shown in the examples above, provide more reliable detection than sensors that use conventional background

suppression (BGS) technology. Before the introduction of the beam-splitting technology Omron calls “free angle optics,” only machine vision systems using carefully controlled lighting could provide the repeatability required for today’s high quality standards. Compared to the low-end vision sensors available today that can perform this task, the dedicated luster sensor is still less than one-third the price. In space-confined sensing sites, the compact fiber-optic sensing head fits in places where most cameras and the required lighting are too bulky.

**For More Information**

Call toll-free, 866-88-OMRON for a demonstration or visit [www.sensors.omron.com](http://www.sensors.omron.com) and search on E3X-NL.